

# Sizewell C Notice to Mariners No 4.1 of 2024(Update) *Survey Operations*

NOTICE IS HEREBY GIVEN that the below survey operations are planned to continue from 12<sup>th</sup> July 2024 until approximately Friday 2<sup>nd</sup> August 2024.

## Nearshore Survey Operations

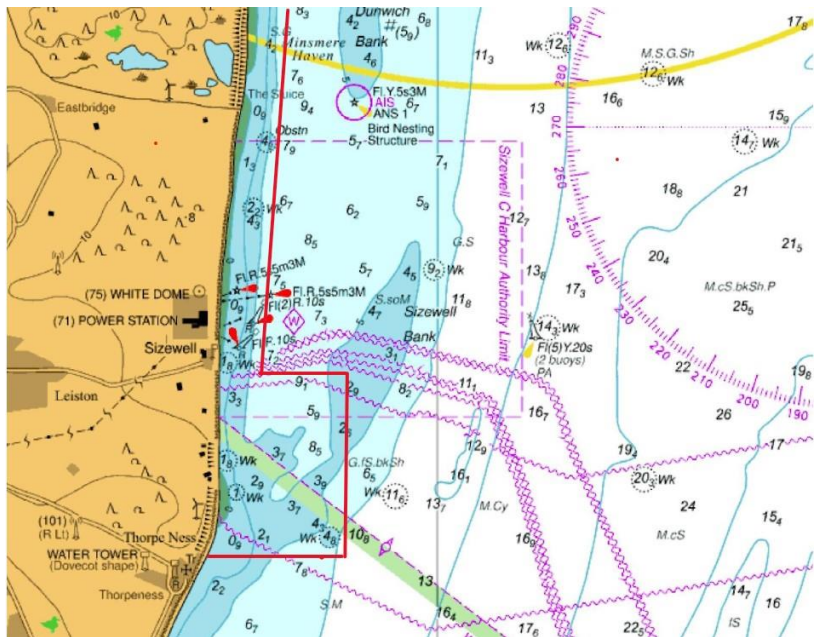
The Nearshore survey operations will be carried out from a twin-hulled 7m catamaran called 'Taran' and will involve the use of multibeam echo sounder (no equipment will be towed).

Survey operations will continue until approximately Friday 2<sup>nd</sup> August 2024 during daylight hours only.

The vessel will be restricted in its ability to manoeuvre.

Other vessels should maintain an appropriate and safe distance when passing the survey vessel whilst it is undertaking survey operations and should pass at the lowest speed to avoid vessel wash effects. The survey vessels will maintain a continuous listening watch on VHF Channel 16.

This chart shows the planned extent of operations to the nearshore within the red line.



SZC Harbour Master

Date: 10<sup>th</sup> July 2024

Any further enquiries regarding this Notice to Mariners should be directed to:

[harbour.master@sizewellc.com](mailto:harbour.master@sizewellc.com)

This notice will be self-cancelling on completion of works.

Cont. over/...

Table 1: Survey Area Coordinates (WGS84)

Name	ID	X	Y
Nearshore Survey Area (North)	1	1°37.556'	52°13.863'
	2	1°37.594'	52°14.321'
	3	1°38.032'	52°14.308'
	4	1°37.995'	52°13.850'
Nearshore Survey Area (South)	1	1°37.556'	52°13.863'
	2	1°37.995'	52°13.850'
	3	1°37.878'	52°12.423'
	4	1°37.440'	52°12.437'