

Sizewell C Notice to Mariners No 6 of 2024

Survey Operations

NOTICE IS HEREBY GIVEN That survey operations are planned to resume on Sunday 28th July 2024 until approximately late September 2024.

Survey Operations

The survey operations will be carried out from a 12m, white twin hulled survey vessel called 'VALKYRIE' during daylight hours only.

Nearshore Survey #1: These survey operations will commence on Sunday 28th July 2024 and will take approximately one week.

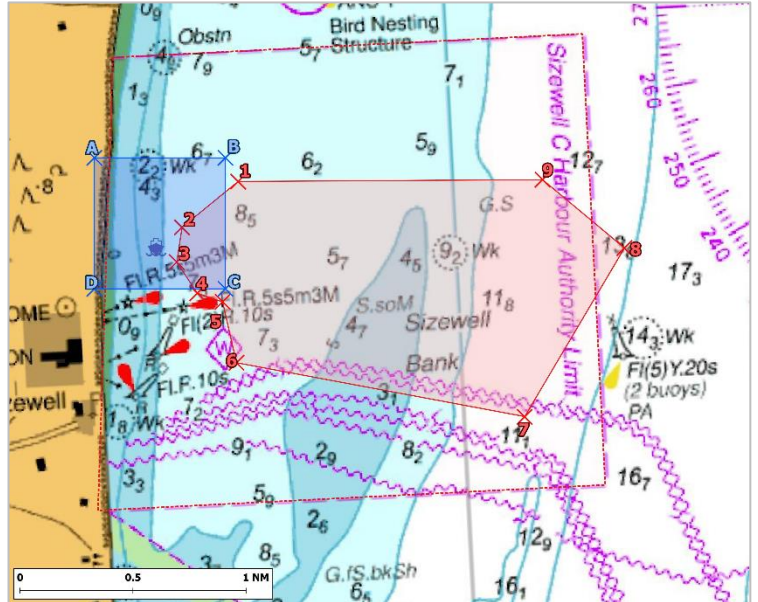
Offshore Survey #2: These survey operations will commence on 3rd August 2024 and are expected to complete before late September 2024.



Both surveys will involve the use of multibeam echo sounder, side scan sonar and also vessel mounted or towed magnetometers. Survey operations will include towing magnetometers from the stern of the vessel at a maximum tow length of around 75m throughout various depths of water.

The vessel will be restricted in her ability to manoeuvre. Other vessels should maintain an appropriate and safe distance of 500m when passing the survey vessel whilst it is undertaking survey operations and should pass at the lowest speed to avoid vessel wash effects. The survey vessel will maintain a continuous listening watch on VHF Channel 16.

This chart shows the planned survey area where operations will be undertaken (coordinates are provided in Table 1 overleaf).



SZC Harbour Master

Date: 25th July 2024

Any further enquiries regarding this Notice to Mariners should be directed to:

harbour.master@sizewellc.com

This notice will be self-cancelling on completion of works.

Table 1: Survey Area Coordinates (WGS84)

	ID	LATITUDE	LONGITUDE
Nearshore coordinates	A	52° 13' 33" N	1° 37' 26" E
	B	52° 13' 32" N	1° 38' 22" E
	C	52° 12' 57" N	1° 38' 20" E
	D (ending at A)	52° 12' 59" N	1° 37' 23" E
Offshore Coordinates	1	52° 13' 25" N	1° 38' 27" E
	2	52° 13' 14" N	1° 38' 02" E
	3	52° 13' 05" N	1° 37' 59" E
	4	52° 12' 56" N	1° 38' 07" E
	5	52° 12' 54" N	1° 38' 18" E
	6	52° 12' 37" N	1° 38' 23" E
	7	52° 12' 19" N	1° 40' 26" E
	8	52° 13' 02" N	1° 41' 12" E
	9	52° 13' 22" N	1° 40' 39" E
	10 (ending at 1)	52° 13' 25" N	1° 38' 27" E