

# Sizewell C Notice to Mariners No 6.1 of 2024

## Update to Survey Operations

NOTICE IS HEREBY GIVEN That survey operations are planned to resume from 1<sup>st</sup> October 2024 for approximately 5 weeks.

A scan of the seabed will be carried out in the nearshore area to identify items as part of a pre-construction survey. The works are due for completion on or around 5<sup>th</sup> November 2024.

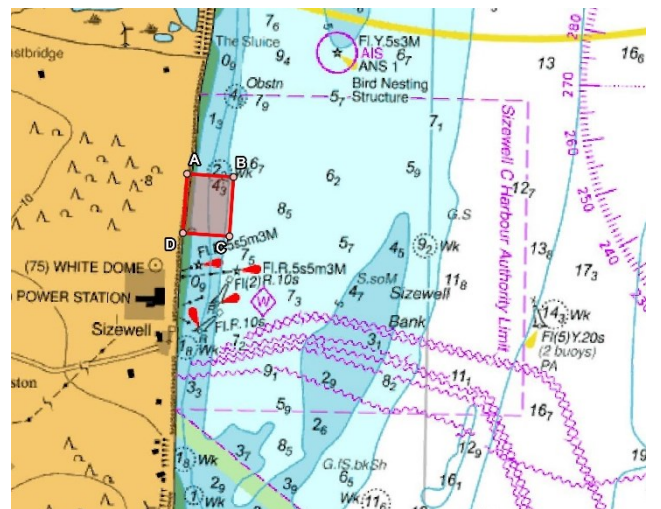
The work will be carried out from a 12m, white twin hulled survey vessel called VALKYRIE (pictured right) which will operate during daylight hours only.

The operation will involve both vessel-mounted and towed equipment from the stern such as side scan sonar and magnetometers. The stern towed equipment will extend approximately 75m behind the vessel.

During the survey work the vessel will be restricted in her ability to manoeuvre due to the towed equipment. Other vessels should maintain an appropriate and safe distance of 500m when passing the survey vessel whilst it is undertaking survey operations and should pass at the lowest speed possible to avoid vessel wash effects.

The survey vessel will maintain a continuous listening watch on VHF Channel 16.

This chart shows the planned survey area where operations will be undertaken (coordinates are provided in Table 1 overleaf).



SZC Harbour Master

Date: 26<sup>th</sup> September 2024

Any further enquiries regarding this Notice to Mariners should be directed to:

[harbour.master@sizewellc.com](mailto:harbour.master@sizewellc.com)

This notice will be self-cancelling on completion of works.

Table 1: Survey Area Coordinates (WGS84)

	<b>ID</b>	<b>LATITUDE (DDM)</b>	<b>LONGITUDE (DDM)</b>
<b>Nearshore coordinates</b>	A	52° 13.48662' N	1° 37.47983' E
	B	52° 13.4718' N	1° 37.96196' E
	C	52° 13.09494' N	1° 37.93118' E
	D	52° 13.10976' N	1° 37.44911' E