

Sizewell C Notice to Mariners No 9 of 2024

Survey Operations

NOTICE IS HEREBY GIVEN That survey operations are planned to take place from Wednesday 2nd October 2024.

Offshore Seabed Camera Survey

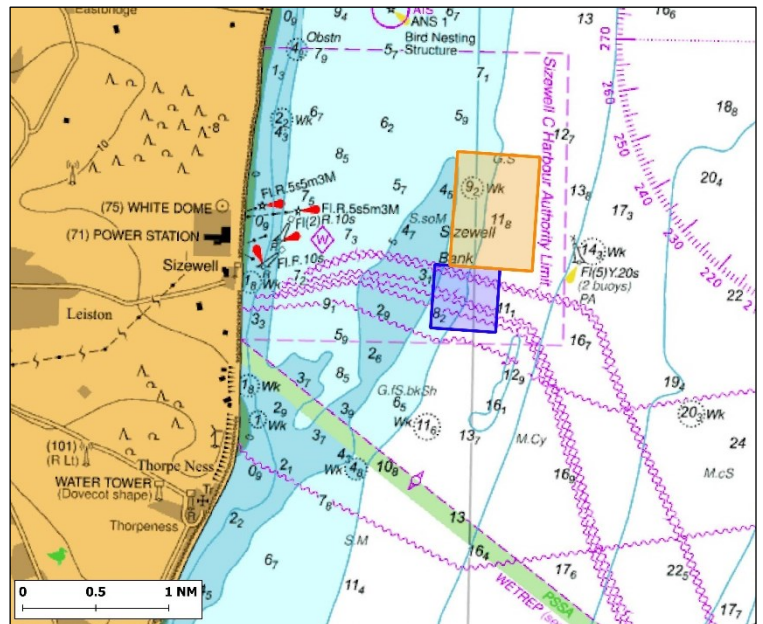
The offshore survey operations will be carried out from a 10.4m, blue hulled coastal survey vessel called ‘Seren Las’. The vessel will visit up to 80 pre-determined positions within the SZC Harbour Area and will position itself at each location for a period of approximately 20 minutes. The operation will involve a camera being lowered from the vessel to survey the seabed whilst it acquires data (no equipment will be towed).

Survey operations are due to commence on/around 2nd October for approximately one week during daylight hours.

Other vessels should maintain a minimum safe distance of 250m when passing the survey vessel whilst it is undertaking survey operations and should pass at the lowest speed to avoid vessel wash effects. The survey vessels will maintain a continuous listening watch on VHF Channel 16



All camera drop downs will occur in the orange offshore infrastructure area and the adjacent blue Coralline crag area as shown in the chartlet – see co-ordinates in Table 1 overleaf.



SZC Harbour Master

Date: 27/09/2024

Any further enquiries regarding this Notice to Mariners should be directed to:

Harbour.Master@sizewellc.com

This notice will be self-cancelling on completion of works.

Table 1: Survey Area Co-ordinates (WGS84)

	Approximate Area (km ²)	Position	Latitude DDM	Longitude DDM
Infrastructure Area	1.52	NE corner	52° 13.2762' N	1° 40.6986' E
		SE corner	52° 12.4938' N	1° 40.6344' E
		SW corner	52° 12.522' N	1° 39.714' E
		NW corner	52° 13.305' N	1° 39.7782' E
Adjacent Coralline Crag Area	0.43	NE corner	52° 12.5046' N	1° 40.2738' E
		SE corner	52° 12.0702' N	1° 40.2378' E
		SW corner	52° 12.093' N	1° 39.5118' E
		NW corner	52° 12.5274' N	1° 39.5472' E